

SEPT. 8, 1927



AND

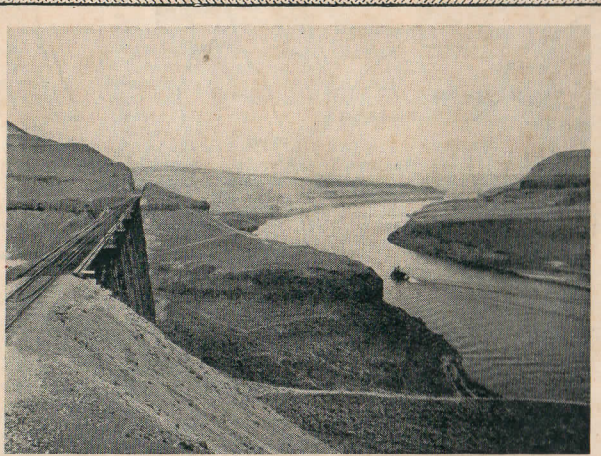
OREGON TRUNK RY.

CENTRAL OREGON LINE

OREGON ELECTRIC RY.

WILLAMETTE VALLEY ROUTE

TIME TABLES



Spokane, Portland & Seattle Railway tracks along the Snake River, between Pasco, and Spokane, Washington.

A. J. DAVIDSON GENERAL MANAGER
R. H. CROZIER GENERAL PASSENGER AGENT
PORTLAND, OREGON

SEPT. 8, 1927



AND

OREGON TRUNK RY.

CENTRAL OREGON LINE

OREGON ELECTRIC RY.

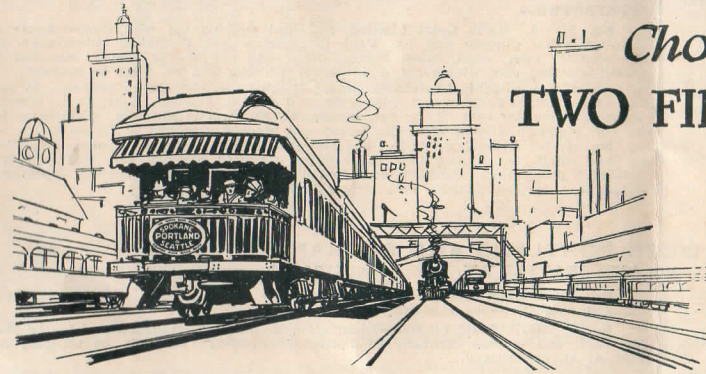
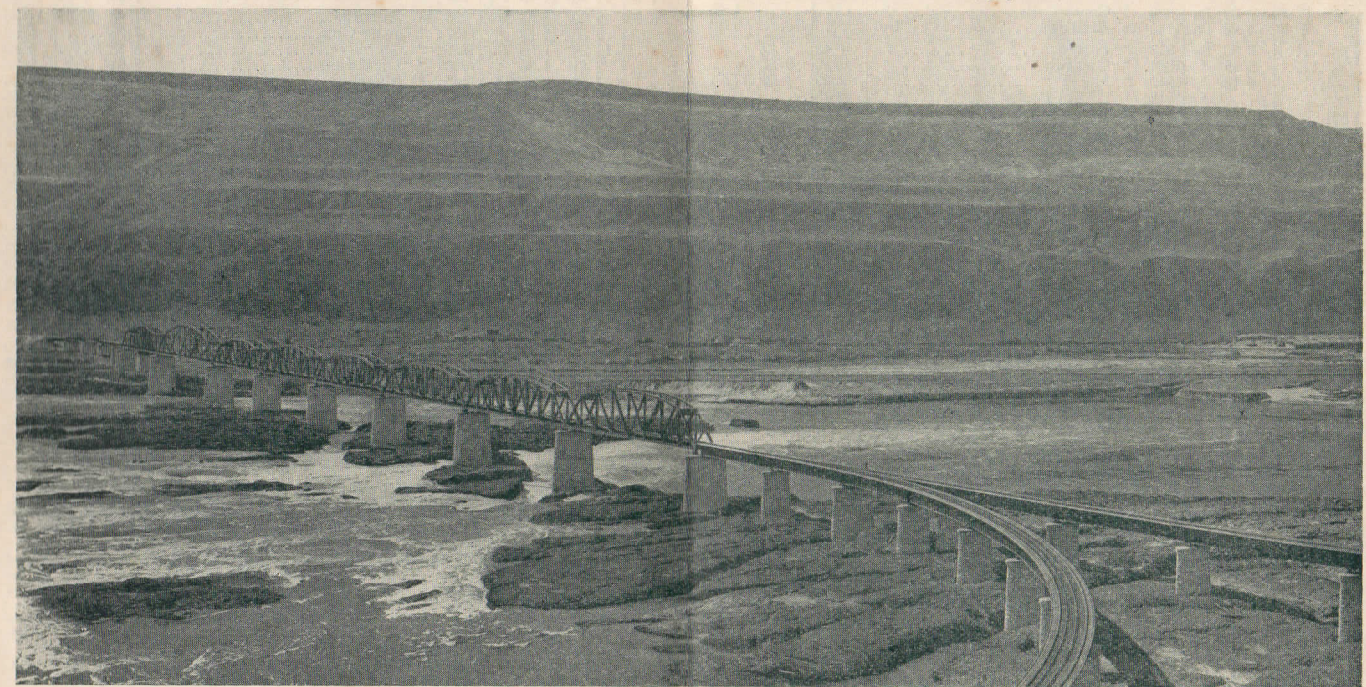
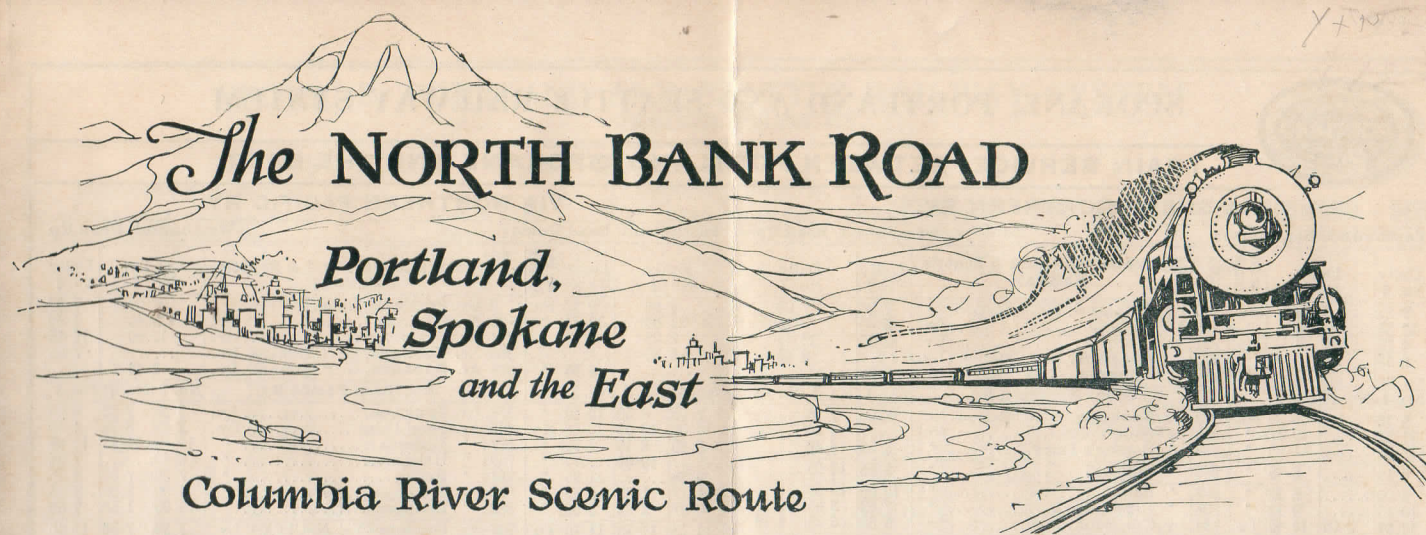
WILLAMETTE VALLEY ROUTE

TIME TABLES



Benham Falls, Deschutes River, near Bend, Oregon, on the Oregon Trunk Railway.

A. J. DAVIDSON GENERAL MANAGER
R. H. CROZIER GENERAL PASSENGER AGENT
PORTLAND, OREGON



Choice of
TWO FINE STEEL TRAINS
Daily

THE ORIENTAL LIMITED via S. P. & S., G. N., C. B. & Q. leaving Portland 8.00 p. m. and THE NORTH COAST LIMITED via S. P. & S., N. P., C. B. & Q., leaving Portland at 9.30 a. m.
70 HOURS Portland—Chicago

See Schedules on Pages 3 and 4



SPOKANE, PORTLAND AND SEATTLE RAILWAY SYSTEM

TRAINS BETWEEN PORTLAND - ST. HELENS - RAINIER - CLATSKANIE - ASTORIA - CLATSOP BEACH

Westbound, Read Down

Eastbound, Read Up

REFERENCES

- b Passenger traffic between Warrenton, Flavel, Hammond and Fort Stevens is handled by stages, daily except Sunday, making connection with Trains No. 21 and 24. Rail tickets accepted.
c Stops to discharge passengers.
d Stops to pick up passengers.
e Stops to discharge passengers from Portland.
f Stops on signal.
g Stops on flag to discharge passengers from Rainier and east.
h Stops to discharge passengers from west of Rainier.
y Stops to pick up passengers for Portland.
t Telegraph office.
Ar.—Arrive. Lv.—Leave.

RAIL EQUIPMENT

Trains Nos. 21, 22, 23 and 24 carry observation parlor cars, coaches and smoking cars between Portland, Astoria and Clatsop Beach points.

Other trains coaches and smoking cars.

Parlor Car Fares: Between Portland and Astoria, Gearhart, Seaside, 50c per seat.

MEALS. Buffet service (for parlor car passengers) is provided in parlor cars in trains Nos. 21, 22, 23 and 24.

AMERICAN RAILWAY EXPRESS

The American Railway Express Company operates on the Spokane, Portland & Seattle Ry., Oregon Electric and other principal lines in the United States, offering safe, speedy, nation-wide service. Through routes and fast schedules are maintained between all important points.

CITY TICKET OFFICES

Spokane—Davenport Hotel—J. T. Hardy, General Agent, Phone Main 4238.
E. H. Brooks, City Pass'r Agt., Phone Main 4238.
Sprague Ave. and Wall St.—E. F. Baird, City Pass'r Agt., N. P. Ry.
Portland—Third and Washington Sts., A. L. Arnold, Agent, Phone Bdy. 5631.

PORTLAND STATIONS

Spokane, Portland & Seattle Ry. trains use Union Station.
Oregon Electric Ry. trains use Oregon Electric Station, Tenth and Hoyt Sts.

SPOKANE STATIONS

S. P. & S. Ry. Trains Nos. 1 and 2 use Great Northern Station, and Nos. 3 and 4 use Northern Pacific Station.



TRAVELERS' AID SERVICE

Representatives of the National Association of Travelers' Aid Societies are at many of the larger stations in the United States, to serve travelers in difficulty and to assist those requiring protection when they arrive in a strange city. Those in need of such service should inquire of station employes for a Travelers' Aid Service representative.

Table with columns for train numbers (No. 61, 23, 21, 22, 24, 62), miles, and departure/arrival times for various stations including Portland, St. Helens, Rainier, Clatskanie, Astoria, and Clatsop Beach.

Table for Longview, Portland & Northern Ry. with columns for Daily, Ex. Sun., and Sun. times for Longview, Olequa, and Ryderwood.

Note 1. Ferry leaves Goble for Kalama, Wn., 9:40, 11:00 a. m., 3:00, 4:15 and 7:40 p. m. daily; arrives Goble from Kalama, 9:15 a. m., 2:05, 4:00, 6:00 and 7:00 p. m. daily.

Note 2. Ferry leaves Rainier for Longview approximately every hour from 6:00 a. m. to 1:00 a. m., Longview bus meeting all ferries.

Light face figures denote A. M. time. Dark face figures denote P. M. time. f Stop on signal.



SPOKANE, PORTLAND AND SEATTLE RAILWAY SYSTEM

OREGON ELECTRIC RAILWAY

PORTLAND - WOODBURN - SALEM - ALBANY - CORVALLIS - HARRISBURG - JUNCTION CITY - EUGENE

From Portland, Read Down

To Portland, Read Up

Large table showing train schedules between Portland and Eugene, including stations like Woodburn, Salem, Albany, Corvallis, Harrisburg, and Junction City. Includes columns for train numbers, miles, and departure/arrival times.

Note - Additional trains for TUALA-TIN leave Portland, 6:50 a. m., except Sunday; 9:40 a. m., 1:15 p. m., daily. Arrive Portland, 7:25 a. m., and 8:35 a. m., both except Sunday; 11:45 a. m., and 4:30 p. m., daily.

PORTLAND - BEAVERTON - ORENO - HILLSBORO - FOREST GROVE

From Portland, Read Down

To Portland, Read Up

Table showing train schedules between Portland and Eugene for the route Portland-Beaverton-Orengo-Hillsboro-Forest Grove. Includes columns for train numbers, miles, and departure/arrival times.

- b Baggage handled. x Baggage not handled.
y Stops to discharge passengers from Donald or South.
h Stops on Flag Sunday only.
f Stops on Signal.

Dining Car Service

Dining Cars are carried in trains No. 1 and 4 of The North Bank Road between Portland and Spokane, and in all trains of the Great Northern and Northern Pacific Railways between Spokane, St. Paul and Chicago. Meals are of the highest order, and a specialty is made of choice meats, fish, poultry and dairy products, vegetables, fruit and berries, for which the western markets are duly famed.

PREVENT FOREST FIRES

A FOREST FIRE MAY BE SLOW IN STARTING, BUT WHEN IT DOES SPREAD, IT IS SURE TO GO. PREVENT FOREST FIRES—IT PAYS.

CONNECTIONS AT EUGENE—COOS BAY POINTS

Table showing connections at Eugene for Coos Bay points, including routes to Eureka, Noti, Mapleton, Cushman (Florence), North Bend, Marshfield, Coquille, Myrtle Point, and Powers.

Light face figures denote A. M. time. Dark face figures denote P. M. time. f Stop on signal.



SPOKANE, PORTLAND AND SEATTLE RAILWAY SYSTEM

PORTLAND - NORTH PLAINS - WILKESBORO - VERNONIA

Read Down Read Up

Table with columns for Daily, Miles, S. P. & S. Ry., and 62 Daily. Lists routes from Portland to Vernonia via Union Station and Linnton.

PORTLAND - ILWACO - NORTH BEACH

Table with columns for No. 21 Daily, S. P. & S. Ry., No. 24 Daily, and Read Up. Lists routes from Portland to North Beach via Astoria.

PORTLAND - PUGET SOUND - BRITISH COLUMBIA

Table with columns for Northbound and Southbound, listing routes between Portland, Tacoma, and Seattle.

CONNECTIONS AT PORTLAND

Medford - Klamath Falls - Sacramento - San Francisco - Los Angeles

Table with columns for Southbound Read Down, All trains daily, and Northbound Read Up. Lists connections to various cities.

No. 11 and 12. The Shasta, Observation, standard sleeping cars and dining cars. Coaches via Medford. (Shower bath, barber, valet.)

COAST LINE - SAN FRANCISCO - SANTA BARBARA - LOS ANGELES

Table with columns for Daily Trains, listing routes between San Francisco, Santa Barbara, and Los Angeles.

VALLEY LINE - SAN FRANCISCO - FRESNO - LOS ANGELES

Table with columns for Daily Trains, listing routes between San Francisco, Fresno, and Los Angeles.

All-Year Seashore, Mountain and Health Resorts

ON THE LINES OF THE SPOKANE, PORTLAND AND SEATTLE RY.



The mild climate of the Northwest makes it possible to enjoy the charm of each changing season in the mountains or by the sea at all-year resorts reached by short and interesting train trips.

Some of these places are suggested on this page—Seaside and Gearhart on Clatsop Beach; rustic Cannon Beach, Pacific Ocean, a short trip from Portland along the wonderful lower Columbia River; Shipperd's and Moffett's Springs, modern health resort hotels, on the Columbia River and in the heart of the Cascade Mountains east of Portland; The Eyrie, at White Salmon, overlooking the Columbia; and Bend, elevation 3,600 feet, on

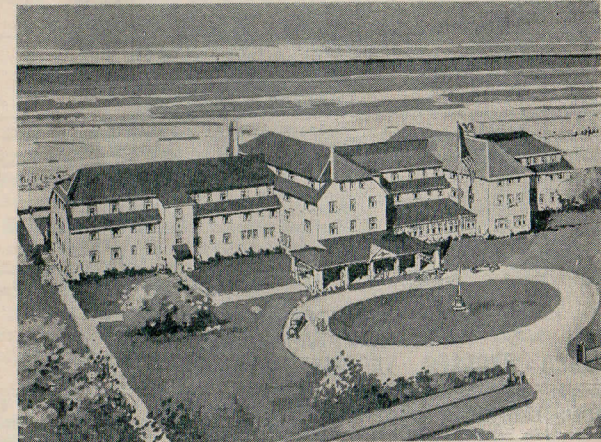


HOTEL SEASIDE

the great plateau of Central Oregon east of the Cascade Mountains, reached by a night ride from Portland.

Opportunities are many for short week-end hikes into the mountains along the Columbia River, such as historic Beacon Rock, or the site of the frontier blockhouses near Cascades Wash.; the Crooked, Deschutes and Wind River Canyons.

Particular information concerning any of these hotels, or an illustrated resort folder will be mailed on request to R. H. Crozier, General Passenger Agent, S. P. & S. Ry., Portland, Oregon.



HOTEL GEARHART BY-THE-SEA

S. P. & S. Transportation Company Stages

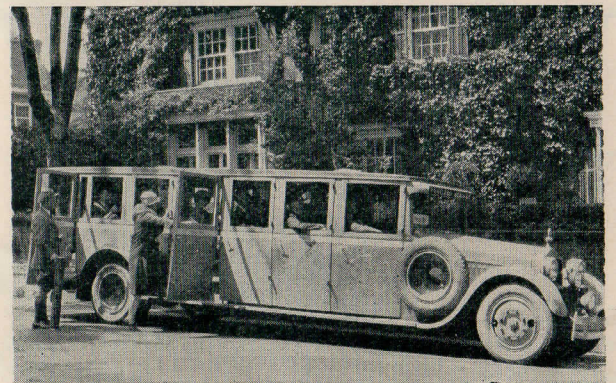
Superior Stage Service between PORTLAND, ST. HELENS, RAINIER, CLATSKANIE, ASTORIA AND SEASIDE. Stage leaves Sixth Street Stage Terminal, Salmon, Fifth to Sixth Streets, at hours shown; Stage Depot, Park and Yamhill Streets, ten minutes later.

Round-trip Stage Tickets will be honored on trains between points served by both stages and trains. One-way stage tickets will not be honored by the S. P. & S. Ry. except for checking baggage between common points.

SIXTH STREET STAGE TERMINAL Salmon, 5th to 6th Sts Telephone Atwater 1545



STAGE DEPOT Park and Yamhill Streets Telephone Beacon 8181



ONLY THE HIGHEST TYPE OF STAGES ARE USED



SPOKANE, PORTLAND AND SEATTLE RAILWAY SYSTEM

CONNECTIONS AT PORTLAND UNION PACIFIC SYSTEM

PORTLAND - BOISE - OGDEN - SALT LAKE - DENVER - OMAHA

Table with columns for train numbers (No. 30, No. 24, No. 26, No. 18, No. 17, No. 23, No. 25, No. 29) and destinations (Portland, Hood River, The Dalles, Pendleton, Baker, Payette, Ontario, Nampa, Boise, Pocatello, Ogdén, Salt Lake, Cheyenne, Denver, Kansas City, Omaha).

CONNECTIONS AT SPOKANE GREAT NORTHERN RAILWAY

SPOKANE - MARCUS - GRAND FORKS - OROVILLE - NELSON

Table with columns for train numbers (256 Daily Ex. Sun., No. 8, No. 9, No. 10, No. 11, No. 12, No. 13, No. 14, No. 15, No. 16, No. 17, No. 18, No. 19, No. 20, No. 21, No. 22, No. 23, No. 24, No. 25, No. 26, No. 27, No. 28, No. 29, No. 30) and destinations (Spokane, Deer Park, Loon Lake, Chewelah, Colville, Marcus, Grand Forks, B. C., Gurlew, Republic, Oroville, Northport, Nelson, B. C.).

h Tues., Thurs, Sat. g Mon., Wed., Fri.

SPOKANE, COEUR D'ALENE & PALOUSE RY. CO.

SPOKANE - COLFAX - PALOUSE - MOSCOW - POTLATCH

Table with columns for train numbers (No. 66, No. 64, No. 62, No. 63, No. 65, No. 67) and destinations (Spokane, Freeman, Mt. Hope, Waverly, Spring Valley, Oakesdale, Garfield, Palouse, Potlatch (W.I. & M. Ry.), Deary, Helmer, Bovill (W.I. & M. Ry.), Moscow, Rosalia, Thornton, Steptoe, Colfax).

* Daily Except Sunday.

SPOKANE, COEUR D'ALENE & PALOUSE RY. CO. SPOKANE - COEUR D'ALENE - HAYDEN LAKE

Table with columns for train numbers (Daily, Daily) and destinations (Spokane, Ar. C-d'Alene, Ar. Hayden Lake).

Light face figures denote A. M. time. Dark face figures denote P. M. time. f Stop on signal.

CONNECTIONS AT SPOKANE NORTHERN PACIFIC RAILWAY

SPOKANE - PALOUSE - PULLMAN - MOSCOW - LEWISTON

Table with columns for train numbers (313 Daily, 311 Daily, M., 312 Daily, 314 Daily) and destinations (Spokane, Marshall, Rosalia, Oakesdale, Garfield, Palouse, Pullman, Moscow, Kendrick, Juliaetta, Lewiston).

SPOKANE INTERNATIONAL RAILROAD—CANADIAN PACIFIC RAILWAY SPOKANE - CALGARY - EDMONTON - WINNIPEG

Table with columns for train numbers (No. 2 Daily, No. 1 Daily) and destinations (Spokane (S. I. Ry.), Kingsgate (C.P.R.), Macleod, Lethbridge, Calgary, Edmonton, Medicine Hat, Swift Current, Moose Jaw, Regina, Brandon, Winnipeg).

*Except Sunday. Sundays arrives Edmonton 11:00 p. m.; leaves 7:00 a. m.

CONNECTIONS AT PASCO NORTHERN PACIFIC RAILWAY

PASCO - PROSSER - TOPPENISH - YAKIMA - ELLENSBURG

Table with columns for train numbers (41 Daily, 1 Daily, 333 Daily, 3 Daily, M., 334 Daily, 2 Daily, 42 Daily, 4 Daily) and destinations (Pasco, Kennewick, Prosser, Mabton, Toppenish, Yakima, Ellensburg).

PASCO - ELTOPIA - CONNELL - RITZVILLE - SPRAGUE

Table with columns for train numbers (2 Daily, 334 Daily, 4 Daily, 42 Daily, M., 333 Daily, 1 Daily, 41 Daily) and destinations (Pasco, Eltopia, Connell, Cunningham, Lind, Ritzville, Sprague).

PASCO - WALLA WALLA - PENDLETON

Table with columns for train numbers (353 Daily, 351 Daily, 349 Daily, 347 Daily, M., 352 Daily, 354 Daily, 350 Daily, 348 Daily) and destinations (Pasco, Attalia, Eureka, Walla Walla, Waitsburg, Dayton, Helix, Pendleton).

† Motor. * Daily except Sunday.

SPOKANE, PORTLAND AND SEATTLE RAILWAY SYSTEM



LOW ROUND TRIP FARES TO

California



America's Winter Paradise

ARE IN EFFECT

from Spokane, Canada and the Inland Empire via S. P. & S. to Portland

giving you your choice of two of America's finest limited trains daily

The North Coast Limited, 8:40 p. m. from Spokane, arriving Portland 7:00 a. m. next morning, and The Oriental Limited leaving at 7:55 a. m., arriving Portland 7:00 p. m. same day. Immediate connections for the South.

Southern Pacific trains leave 8:30 a. m., 5:00 p. m., 10:05 p. m. and 1:00 a. m. (SCHEDULES PAGE 12.) Pacific S. S. Co. steamers sail Tuesdays and Saturdays at 2 p. m. for San Francisco, Los Angeles, and San Diego, and Wednesdays at 10:00 p. m. for San Francisco. Boats leave from Admiral Line Terminal, foot of Thurman Street. City Ticket Office, Third and Stark Streets.

For fares, sleeping car reservations, etc., from Canadian and Inland Empire points, please call or address—

E. H. BROOKS, City Pasgr. Agt., J. T. HARDY, Gen. Agt. DAVENPORT HOTEL TICKET OFFICE Spokane

Main 4238



OREGON ELECTRIC RAILWAY Superior Train Service

through the heart of the

WILLAMETTE VALLEY

Four trains daily each way between Portland and Eugene, Corvallis and Albany; six between Portland and Salem, Woodburn and other intermediate points.

(See schedules pages 9 and 10)

Through tickets are sold to and from points on the Oregon Electric Railway via Portland and all lines north and east.

SLEEPING AND PARLOR CAR FARES INCLUDING SURCHARGES

Subject to change without notice.

Table with columns for destinations (Albany, Astoria, Bend, Billings, Bozeman, Butte, Camas, Chicago, Corvallis (Gray), Denver, Duluth, Eugene, Fargo, Gearhart, Granddalle, Great Falls, Havre, Helena, Kansas City, Lincoln, Livingston, Los Angeles, Lyle, Minneapolis, Missoula, Oakland, Omaha, Pasco, Portland, St. Louis, St. Paul, Sacramento, Salem, San Francisco, Seaside, Spokane, Stevenson, Vancouver, White Salmon, Wishram) and fare types (Seat, Standard, Lower, Berth, Compartment, Drawing Room, Tourist, Lower, Berth).

*No through car; fare applies for continuous trip via direct connections. The fare for a section is the combined fare of an upper and a lower berth. The fare for an upper berth is 80% of the lower berth fare. A compartment is a private room with lower and upper berths and toilet; a drawing room has a divan berth in addition. Occupancy of a drawing room requires two adult rail tickets, or their equivalent. For a compartment 1 1/2 tickets are required.

Large advertisement with the text 'WAIT! YOU MAY LOSE' and an illustration of a train crossing a street. Below the illustration is the text 'CROSS CROSSINGS CAUTIOUSLY'.

STAGE AND BOAT CONNECTIONS

To points in Oregon and Washington reached from stations on the Spokane, Portland & Seattle Ry. east of Portland and Oregon Trunk Ry.

Destination	From	Conveyance	Days	Time	Fare	Free Baggage lbs
Oregon:						
Arlington	Roosevelt	Ferry	Daily	Frequent	\$0.30	Hand
Ashwood	Madras	Auto Stage	Ex. Sun.	7:00 AM	2.50	50
Boulder	Alderdale	Ferry	Daily	Frequent	1.00	Hand
Burns	Bend	Auto Stage	M. Th. Sat.	8:45 AM	10.50	Hand
Chiloquin	Bend	Auto Stage	Daily	8:45 AM	9.00	Hand
Crescent	Bend	Auto Stage	Daily	7:30 AM	4.50	30
				1:30 PM		
Criterion	Maupin	Auto Stage	Tu., Fri.	8:00 AM	1.00	Hand
File	Prineville	Auto Stage	Mo., Th.	7:30 AM	4.50	Hand
Ft. Klamath	Bend	Auto Stage	Daily	7:30 AM	7.00	30
				1:30 PM		
Ft. Rock	Bend	Auto Stage	Daily	7:30 AM	5.00	25
				1:30 PM		
Fremont	Bend	Auto Stage	Daily	9:00 AM	4.50	25
Geneva	Culver	Spl. Auto.			7.00	
Gist	Redmond	Auto Stage	Ex. Sun.	8:00 AM	2.00	
Grandview	Culver	Spl. Auto.			5.00	
Grant	Maryhill	Ferry	Daily	Frequent	.50	Hand
Grizzly	Madras	Auto Stage	Ex. Sun.	7:00 AM	1.75	40
Hay Creek	Madras	Auto Stage	Ex. Sun.	7:00 AM	1.00	50
Hood River	Underwood	Auto Stage	Daily	Frequent	3.10	Hand
Hood River	WhiteSalm'n	Spl. Autos	or by foot	over Bridg.		
Klamath Falls	Bend	Auto Stage	Daily	7:30 AM	10.00	25
				1:30 PM		
Lakeview	Bend	Auto Stage	Daily	8:30 AM	12.50	25
Lamonta	Culver	Spl. Auto.			4.00	
La Pine	Bend	Auto Stage	Daily	9:00 AM	3.15	25
Millican	Bend	Auto Stage	M. Th. Sat.	9:00 AM	2.50	25
Mitchell	Prineville	Auto Stage	Ex. Sun.	8:30 AM	4.00	Hand
Paisley	Bend	Auto Stage	Daily	9:00 AM	9.25	25
Paulina	Prineville	Auto Stage	Ex. Sun.	8:30 AM	5.00	Hand
Post	Prineville	Auto Stage	Ex. Sun.	8:30 AM	2.50	25
Riley	Bend	Auto Stage	M. Th. Sat.	9:00 AM	9.00	
Rowena	Lyle	Ferry	Daily	Frequent	.25	Hand
Silver Lake	Bend	Auto Stage	Daily	9:00 AM	6.00	25
Sisters	Redmond	Auto	Ex. Sun.	8:30 AM	2.00	
Summer Lake	Bend	Auto Stage	Daily	9:00 AM	7.75	25
The Dalles	Granddalles	Ferry	Daily	Frequent	.25	50
Tumalo	Deschutes	Auto	Ex. Sun.	8:15 AM	1.50	50
Tygh Valley	Sherar	Auto Stage	Ex. Sun.	2:00 PM	.50	Hand
Umatilla	Plymouth	Ferry	Daily	Day & Night	1.00	Hand
Wamic	Sherar	Auto Stage	Ex. Sun.	2:00 PM	1.50	Hand
Warm Springs	Gateway	Stage	Ex. Sun.	9:30 AM	1.50	Hand
Suspends in Winter	inter.					
Washington:						
Appleton	Lyle	Stage	Ex. Sun.	6:30 AM	1.50	Hand
Atahua	Hover	Ferry	Daily	Frequent	.25	100
Battle Ground	Vancouver	Auto Stage	Daily	Frequent	.75	Hand
Bickleton	Roosevelt	Auto Stage	Ex. Sun.	2:00 PM	3.00	Hand
Brush Prairie	Vancouver	Auto Stage	Daily	Frequent	.50	Hand
Cheney	So. Cheney	Spl. Auto.			1.00	
Chenowith	Underwood	Stage	Ex. Sun.	12:15 PM	.75	Hand
					2.50	Hand
Cleodell	Roosevelt	Auto Stage	Ex. Sun.	2:00 PM	2.50	Hand
Dot	Roosevelt	Auto Stage	Ex. Sun.	2:00 PM	2.00	Hand
Glilmer	WhiteSalm'n	Auto Stage	Ex. Sun.	1:00 PM	1.50	Hand
Glenwood	Underwood	Auto on call			10.00	Hand
Glenwood	WhiteSalm'n	Auto Stage	Ex. Sun.	1:00 PM	2.50	Hand
Goldendale	Maryhill	Auto Stage	Daily	All trains	1.00	Hand
Govern't Spgs.	Carson	Auto	Daily	11:00 AM	Free	Hand
Guler	Underwood	Auto on call			8.00	Hand
Guler	WhiteSalm'n	Auto Stage	Ex. Sun.	1:00 PM	2.00	Hand
Hanford	Kennewick	Auto Stage	Daily	8:00 AM	2.50	Hand
Hookinson	Vancouver	Auto Stage	Daily	11:15 AM	.75	Hand
					7.15 PM	Hand
					3.00	Hand
Husum	Underwood	Auto on call			1.00 PM	Hand
Husum	WhiteSalm'n	Auto Stage	Ex. Sun.	1:00 PM	.75	Hand
La Center	Vancouver	Auto Stage	Ex. Sun.	10:30 PM	.75	Hand
					10:30 PM	Hand
Laurel	WhiteSalm'n	Auto Stage	Ex. Sun.	1:00 PM	2.00	Hand
Liberty Bond	Lyle	Stage	Ex. Sun.	6:30 AM	2.00	Hand
Moffett's Spgs.	Cascades	Auto	Daily	All trains	.25	Hand
Oriahards	Vancouver	Auto Stage	Daily	Frequent	.25	Hand
Riohland	Kennewick	Auto Stage	Daily	8:00 AM	.75	Hand
St. Martin's Spg.	Carson	Auto	Daily	All trains	.75	Hand
Shipherd's Spgs.	Carson	Auto	Daily	All trains	.75	Hand
Snowden	WhiteSalm'n	Auto Stage	Ex. Sun.	7:00 AM	1.50	Hand
The Cedars	Underwood	Auto on call			4.00	Hand
Trout Lake	Underwood	Auto on call			4.00	Hand
Trout Lake	WhiteSalm'n	Auto Stage	Ex. Sun.	1:00 PM	2.00	Hand
White Bluffs	Kennewick	Auto Stage	Daily	8:00 AM	3.00	Hand
White Salmon	WhiteSalm'n	Auto	Daily	by appointment	35	Hand
White Salmon	Underwood	Auto Stage	Daily	Alltrains	50	Hand
Yaocit	Vancouver	Auto Stage	Daily	Frequent	2.00	Hand

† Suspends in Winter. * Suspends only in case of heavy ice in river. The information shown above is prepared from the best data obtainable, but it is subject to change without notice and neither service nor rates are guaranteed.

GENERAL OFFICES CHAMBER OF COMMERCE BUILDING 271 Stark Street, corner Fourth PORTLAND, OREGON

OFFICERS

W. F. TURNER, President, Portland, Oregon

OPERATING DEPARTMENT

A. J. DAVIDSON, General Manager, Portland, Oregon

G. E. VOTAW, Superintendent, Portland, Oregon

PASSENGER AND FREIGHT TRAFFIC DEPARTMENTS

R. H. CROZIER, General Passenger Agent, Portland, Oregon

R. W. PICKARD, General Freight Agent, Portland, Oregon

REPRESENTATIVES

ALBANY, ORE., H. C. REEVES (Phone M. 250) Agent, 5th and Lyon.

ASTORIA, ORE., J. J. HOYDAR, General Agent

M. A. FUEGY, Traveling Freight and Pass. Agent
Telephone 118, S. P. & S. Ry. Station, 20th and Commercial Sts.

BEND, ORE., A. F. SHUGERT (Phone 54) Agent, Union Station

CORVALLIS, ORE., G. W. SEXSMITH (Phone 467) Agent, O. E. Ry. Sta.

EUGENE, ORE., F. S. APPELMAN (Phone 140) Agent, O. E. Ry. Sta.

FOREST GROVE, ORE., G. H. RUSSELL (Phone Main 351) Agent, O. E. Ry. Station.

HARRISBURG, ORE., R. W. KESSELL (Phone 292) Agent, O. E. Ry. Station

HILLSBORO, ORE., L. D. SHERMAN (Phone M. 541) Agent, O. E. Ry. Sta.

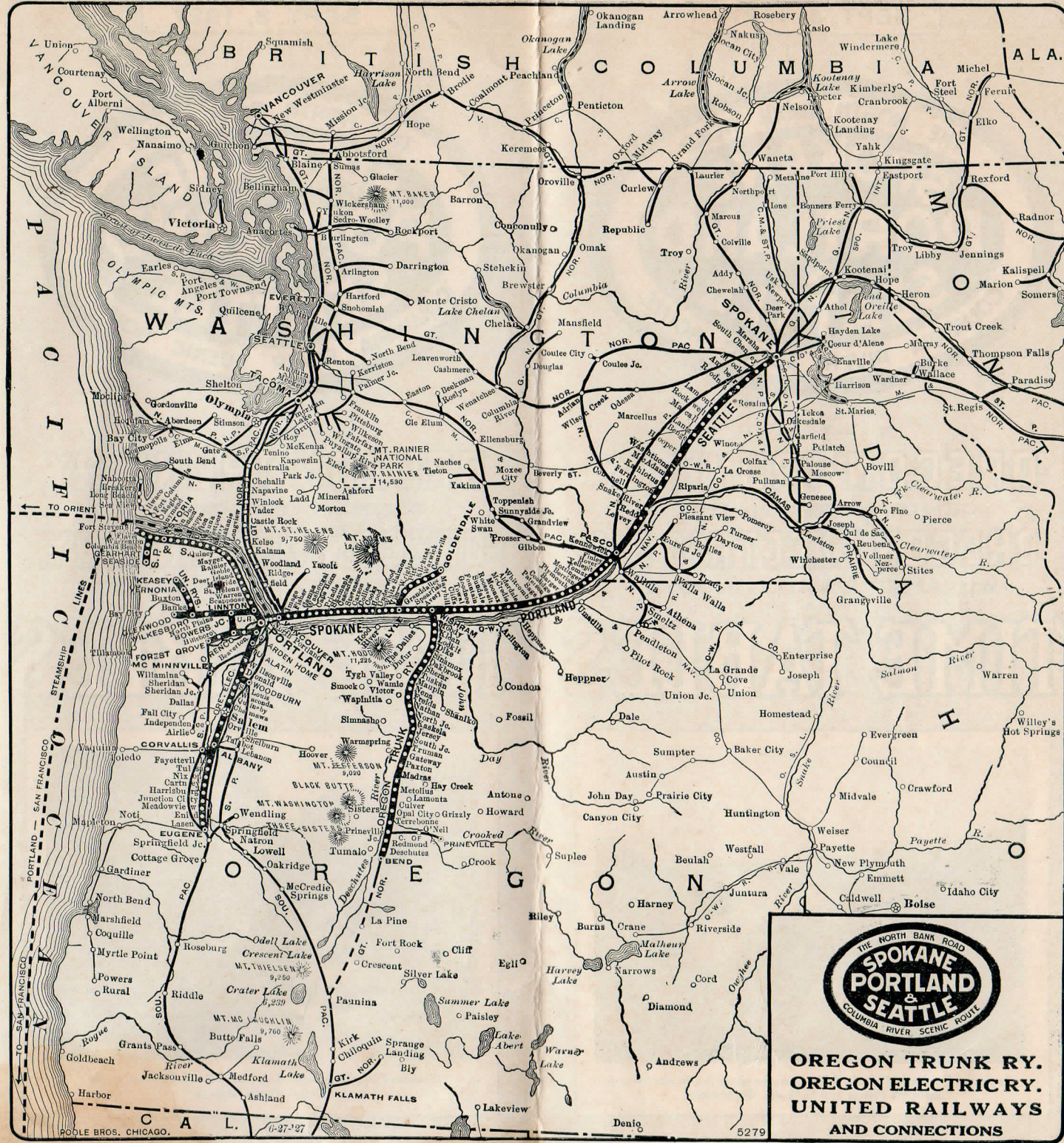
JUNCTION CITY, ORE., L. W. MALLORY (Phone M. 382) Agent, O. E. Ry. Sta.

| PORTLAND, ORE., A. L. ARNOLD—Agent, Consolidated Ticket Office, Third and Washington Sts. Telephone Bdy 5631. |
| L. F. KNOWLTON, City and Traveling Pass. Agent, 922 Chamber of Commerce Building. |
| J. C. MOORE, Gen'l Agent, Freight Department |
| H. W. SHIELDS, Contracting Freight Agent |
| R. E. MEATS, Contracting Freight Agent |
| E. R. SCHULTZ, Contracting Freight Agent |
| J. C. WRIGHT, Trav. Freight and Pass. Agent |
| G. F. DINWOODIE, Trav. Freight and Pass. Agent 928 Chamber of Commerce Building. |
| H. SHEEDY, Agent, O. E. Ry. Station, 10th & Hoyt Sts. |
| C. O. BUTLER, Tkt. Agt., O. E. Ry., Jefferson St. Sta. |
| J. L. MILLER, Tkt. Agt., Union Station, Foot of 6th Street. Telephone Broadway 0802. |
| REDMOND, ORE., A. P. MEYERS (Phone Black 79) Agent, Union Station |
| SALEM, ORE., J. H. BRADY (Phone M. 727) Trav. Freight Agent |
| J. W. RITCHIE (Phone M. 727) Agent, O. E. Ry. Sta. |
| SAN FRANCISCO, CAL., F. R. FORBES, Dist. Freight & Pass. Agent |
| L. S. DAVIS, City Freight and Passenger Agent 528 Monadnock Building. |
| SEASIDE, ORE., S. A. SEXSMITH (Phone 45) Agent, S. P. & S. Ry. Station. |
| SPOKANE, WASH., J. T. HARDY, General Agent, Davenport Hotel |
| E. H. BROOKS, City Pass. Agent, Davenport Hotel |
| J. G. TRAVERS, City Frt. Agt., Davenport Hotel |
| H. W. GREEN, Ticket Agent, Gt. Nor. Ry. Station |
| T. A. BRADY, Ticket Agent, Nor. Pac. Ry. Station |
| VANCOUVER, WASH., W. R. EMERSON (Phone 735) Ticket Agent, S. P. & S. Ry. Station. |
| J. H. CORBETT, Freight Agt., S. P. & S. Ry. Depot |
| I. E. BEERS, Drug Store, Front and Grant Sts. Agent. |
| **PASSENGER STATIONS** | |
| PORTLAND, ORE., S. P. & S. Ry., Union Station, Foot of Sixth Street. |
| Oregon Electric Ry., Oregon Electric Station, Tenth and Hoyt Streets, Sixth Street Terminal, Salmon, 5th to 6th Streets, and Jefferson Street Station, Front and Jefferson Streets. |
| SPOKANE, WASH., Northern Pacific Station. Trains No. 3 and 4. |
| Great Northern Station. Trains No. 1 and 2. |

The representatives of these railroads named above, and at other points will gladly quote passenger fares and freight rates, make reservations for sleeping car accommodations, and give full details regarding tickets and freight to or from points throughout the United States and Canada.

The Spokane, Portland & Seattle, Oregon Trunk and Oregon Electric Rys. are affiliated with the Northern Pacific, Great Northern and Chicago, Burlington & Quincy Rys. Representatives and agents of these lines, and others throughout the East and West, will supply full information regarding these lines, or communications may be addressed to

R. H. CROZIER, General Passenger Agent, S. P. & S. Ry.
PORTLAND, OREGON



**OREGON TRUNK RY.
OREGON ELECTRIC RY.
UNITED RAILWAYS
AND CONNECTIONS**