

STAGE AND BOAT CONNECTIONS

To points in Oregon and Washington reached from stations on the Spokane, Portland and Seattle Ry. east of Portland and on Oregon Trunk Ry.

Table with columns: Destination, From, Conveyance, Days, Time, Fare, Free Baggage Lbs. Lists routes to Oregon and Washington.

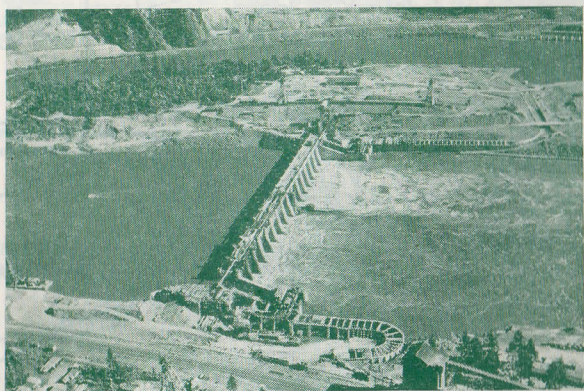
Notes regarding fares, suspensions, and stage driver information.

SHIP AND TRAVEL BY TRAIN



Spokane, Portland and Seattle Ry. Oregon Trunk Ry. Oregon Electric Ry. United Railways Co.

TIME TABLES



Bonneville Dam, Columbia River, from Train Windows, S. P. & S. Ry.

SUBJECT TO CHANGE WITHOUT NOTICE

SPOKANE, PORTLAND AND SEATTLE RAILWAY SYSTEM



TRANSCONTINENTAL TRAIN SERVICE—BETWEEN PORTLAND, SPOKANE AND THE EAST

VIA GREAT NORTHERN RY.

Train schedule table for VIA GREAT NORTHERN RY. showing Eastbound and Westbound routes with times and equipment.

VIA NORTHERN PACIFIC RY.

Train schedule table for VIA NORTHERN PACIFIC RY. showing Eastbound and Westbound routes with times and equipment.

Notes regarding stops and equipment for the Northern Pacific routes.

Notes regarding motor service for the Northern Pacific routes.

EASTBOUND EQUIPMENT

Description of equipment for Eastbound trains, including No. 2 Empire Builder and No. 2-28 Observation Club Car.

WESTBOUND EQUIPMENT

Description of equipment for Westbound trains, including No. 1 Empire Builder and No. 27-1 Coaches only.

EASTBOUND EQUIPMENT

Description of equipment for Eastbound trains, including No. 2 North Coast Limited and No. 4-4 Columbia River Express.

WESTBOUND EQUIPMENT

Description of equipment for Westbound trains, including No. 1 North Coast Limited and No. 3-1 Alaskan.

NORTH COAST LIMITED AND EMPIRE BUILDER ARE COMPLETELY AIR CONDITIONED

Light face figures denote A. M. time. Dark face figures denote P. M. time. Ar. Arrive. Lv. Leave. / Stop on signal.



SPOKANE, PORTLAND AND SEATTLE RAILWAY SYSTEM

OREGON TRUNK RY. Pacific Time

PORTLAND - WISHRAM - PASCO - SPOKANE TRAINS

Table with columns for train numbers (No. 4, No. 2, No. 1), directions (Eastbound, Westbound), and station names (Spokane, Portland, Seattle, etc.).

PORTLAND - REDMOND - BEND TRAINS

Table with columns for train numbers (No. 2, No. 102, No. 103), directions (Read Down, Read Up), and station names (Portland, Wishram, Bend, etc.).

EQUIPMENT BETWEEN PORTLAND and BEND Trains Nos. 2-102 and 1-103. Standard 16 section sleeping cars leave Portland Sun., Tues. and Thurs. for Bend; leave Bend Mon., Wed. and Fri. for Portland.

CONNECTION AT BEND FOR KLAMATH FALLS See schedule of Great Northern Ry. on page 6.

LYLE - KLICKITAT - GOLDFIELD TRAINS

Table with columns for train numbers (No. 220, No. 221), directions (Daily, ex. Sat.), and station names (Lyle, Klickitat, Goldfield, etc.).

Ex. Sat. denotes daily except Saturdays. Ex. Sun. denotes daily except Sunday. Equipment, coaches.

EQUIPMENT-BETWEEN PORTLAND AND SPOKANE

Over-Night Limited. Trains Nos. 1 and 2. Every regularly assigned car air-conditioned. Observation-club cars with barber, bath, valet periodicals, fountain, radio, etc., standard 12 section, 1 drawing room and 8 section, 2 compartment, 1 drawing room sleeping cars, latest type tourist sleeping cars, and de luxe coaches with lounges for women and men, and individual, reclining seats, porter and free pillows.

Columbia River Express. Day Trains Nos. 3 and 4. Observation reserved seat coaches, with wide windows, individual chairs (50c) and cafe meal service at economy prices, and coaches (N. A. C.)

For Special Stops on Nos. 1 and 2. See left column, page 3, and under "References" below.

- References: a Will stop on signal to discharge revenue passengers from Spokane. b Will stop on signal to receive revenue passengers for Bingen-White Salmon, Vancouver and Portland. c Will stop on signal to receive revenue passengers for Vancouver and Portland f Stop on signal. g Will stop on signal to discharge revenue passengers from Portland and Vancouver. h Will stop to discharge revenue passengers from Portland, Vancouver and Bingen-White Salmon. t Telegraph stations. N.A.C. Non air-conditioned.

SPOKANE, PORTLAND AND SEATTLE RAILWAY SYSTEM



PORTLAND - ST. HELENS RAINIER - ASTORIA - CLATSOP BEACH TRAINS

Table with columns for train numbers (No. 23, No. 21, No. 22, No. 24), directions (Westbound, Eastbound), and station names (Portland, St. Helens, Rainier, Astoria, Clatsop Beach, etc.).

TRAIN EQUIPMENT

Nos. 21 and 24 carry observation-parlor-cafe cars, coaches and smoking cars between Portland, Astoria and Seaside. Nos. 23 and 22 carry coaches and smoking cars daily, and observation-parlor cafe cars on Nos. 23 Fridays, Saturdays and Sundays, and No. 22 Saturdays, Sundays and Mondays. Cafe dining service in observation cars on Nos. 21, 22, 23, 24 where shown above. Parlor car seat fare, 50c between Portland and Astoria, Gearhart and Seaside.

LOWER COLUMBIA RIVER MOTOR STAGES

Superior motor stage service is maintained along the wonderful, scenic Lower Columbia River Highway by the S. P. & S. Transportation Co. between Portland St. Helens, Rainier, Astoria, Gearhart and Seaside. See page 7 for schedules.

OREGON ELECTRIC RY. PORTLAND-SALEM-ALBANY-EUGENE

Table with columns for train numbers (No. 22, No. 24), directions (Freight Service Only), and station names (Portland, Salem, Albany, Eugene, etc.).

GREAT NORTHERN RY. BEND, KLAMATH FALLS, BIEBER

Table with columns for train numbers (Daily, Mix'd), directions (Lv. Bend, Ar. Bieber), and station names (Bend, Klamath Falls, Bieber, etc.).

UNITED RAILWAYS PORTLAND-NORTH PLAINS-VERNONIA

Table with columns for train numbers (No. 10, No. 11), directions (Freight Service Only), and station names (Portland, North Plains, Vernonia, etc.).

RESPONSIBILITY

Not Responsible - The Spokane, Portland and Seattle Railway Company is not responsible for errors in time tables, inconvenience or damage resulting from delayed trains or failure to make connections; schedules herein are subject to change without notice.

Low Round Trip Fares East All Winter

Table with columns for destination (Portland, Chicago, Kansas City, Milwaukee, New Orleans, St. Louis, St. Paul), Standard fare, Tourist fare, and Coach fare.

Table with columns for destination (New York, Atlanta, Boston, Cincinnati, Philadelphia, Washington), Standard fare, Tourist fare, and Coach fare.

Other Eastern Points in proportion

"Standard" good in all classes of equipment. "Tourist" good in tourist sleeping cars and coaches. "Tourist-Standard" good in tourist sleeping cars to Chicago, standard sleeping cars beyond. "Tourist-Coach" good as above to Chicago, coaches beyond. "Coach" good in coaches only. \*Good in tourist sleeping cars where available. Sleeping car charges are additional. (See page 11)



All tickets honored on the famous, fast, air-conditioned trains Empire Builder and North Coast Limited, between Portland, Spokane, Minneapolis, St. Paul and Chicago. Schedules and equipment are shown on pages 1 and 2.



SPOKANE, PORTLAND AND SEATTLE RAILWAY SYSTEM

CONNECTIONS AT PORTLAND

PORTLAND - PUGET SOUND - BRITISH COLUMBIA

GREAT NORTHERN RY. - NORTHERN PACIFIC RY. - UNION PACIFIC R. R.

Table of train schedules for Portland - Puget Sound - British Columbia routes, including northbound and southbound directions.

Except Sunday. King Street Station. Union Station.

SPOKANE, PORTLAND and SEATTLE TRANSPORTATION COMPANY

Table of motor stages between Spokane, Portland, and Seattle, showing routes and times.

Additional stages leave Portland at 10:15 A.M., 1:45 P.M. (to Rainier), 6:15 P.M., 11:00 P.M. daily, arriving St. Helens 11:20 A.M., 2:55 P.M., (Rainier 3:40 P.M.), 7:20 P.M., and 12:05 A.M. Also leave St. Helens 7:30 A.M., (Rainier 8:00 A.M.), 9:00 A.M., 2:00 P.M. and 6:35 P.M. daily, arriving Portland 8:35 A.M., 10:05 A.M., 3:05 P.M., 7:40 P.M.

Stage terminal S. W. Park Ave. and Yamhill St. Phone ATwater 5171.

REGULAR INTRASTATE TICKETS BETWEEN COMMON POINTS ARE HONORED ON STAGES OR TRAIN



CLATSOP BEACH

SEASIDE - GEARHART PACIFIC OCEAN

Surrounded by evergreen forests and a background of mountains, Clatsop Beach has every facility for the pleasure and recreation of visitors—golf courses, fishing, amusement places, sea foods, pure water, good hotels, restaurants, cottages, and camps. A wonderful trip along the expanding Columbia River. Round trip fares from Portland, \$4.65 Gearhart, \$4.75 Seaside. Train schedules page 5, Stages page 7.

SOUTHERN PACIFIC COMPANY

Southbound, Read Down All trains daily

Table of train schedules for Southern Pacific routes from Portland to Los Angeles, including distances and times.

EQUIPMENT OF TRAINS

Train 7. Shasta.—(All Air Conditioned). Cafe lounge car, standard 10 section, 1 drawing room, 2 compartment sleeping car, tourist sleeping car and coaches Portland to San Francisco.

SAN FRANCISCO-LOS ANGELES-COAST LINE

Table of train schedules for San Francisco-Los Angeles-Coast Line routes.

SAN FRANCISCO-LOS ANGELES-VALLEY LINE

Table of train schedules for San Francisco-Los Angeles-Valley Line routes.

UNION PACIFIC RAILROAD

Table of train schedules for Union Pacific Railroad routes.

Light face figures denote A. M. time. Dark face figure denote P. M. time. Ar. Arrive. Lv. Leave. f Stop on signal.

SPOKANE, PORTLAND AND SEATTLE RAILWAY SYSTEM



CONNECTIONS AT SPOKANE AND PASCO

Table of train schedules for Spokane and Pasco connections, including routes and times.

To California THIS WINTER



See the new, wonderful bridges across San Francisco Bay, and share in the myriad works of nature and man in the Golden State.

Excursion fares are in effect by the S. P. & S. Ry. every day to San Francisco, Los Angeles, San Diego, Santa Barbara, Del Monte, etc., with stopovers and liberal limits.

S. P. & S. trains leave Spokane 8:30 A.M. and 9:45 P.M., and arrive Portland, Union Station, 6:30 P.M. and 7:35 A.M., connecting with Southern Pacific trains for California; schedules on page 8.

ROUND TRIP FARES FROM SPOKANE

Table of round trip fares from Spokane to various destinations.

Tickets are good for stop-overs within limit: Coach-tourist tickets are honored in tourist sleeping cars or coaches; standard tickets in standard or tourist sleeping cars or coaches; sleeping car accommodations are at additional charges.



Light face figures denote A. M. time. Dark face figures denote P. M. time. Ar. Arrive. Lv. Leave. f Stop on signal.



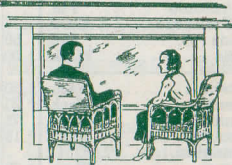
Along the Columbia and Snake Rivers and Through the Heart of the Cascade Range

The day express trains give passengers the pleasure of a rare panorama of plateau, river, mountain and forest scenery and Bonneville Dam, from coaches or reserved seat coaches with individual chairs, wide windows and observation platforms which add greatly to the pleasure of the trip; seat fare fifty cents. Cafe service for the three meals at economy prices.

The night limited trains furnish every feature for comfort and pleasure in modern travel—Completely air-conditioned—observation club cars, with radio, barber, fountain, magazines, lounge chairs, etc., standard and latest type tourist sleeping cars and newest style coaches, with lounges for men and women, porter and free pillows.

Very low train fares are now in effect between Portland and Spokane—in coaches only, one way \$7.50, round trip \$14.25; in reserved seat coaches, regular coaches and tourist sleeping cars, one way \$8.43, round trip \$16.05, with return limit 30 days; in standard sleeping cars and other equipment, one way \$11.24, round trip \$16.90 with return limit 30 days, and \$20.65 with return limit 6 months.

Berth and reserved seat charges are additional; see page 11.





SPOKANE, PORTLAND AND SEATTLE RAILWAY SYSTEM

Sleeping, Parlor Car and Reserved Seat Fares

For information only. Subject to change without notice.

Table with columns for routes (e.g., Astoria, Bend, Billings) and fares for different classes of service (Lower Berth, Compartment, Drawing Room).

Through cars not operated in all trains; fare applies for continuous trip via direct connections. The fare for a section is the combined fare of an upper and a lower berth.

BAGGAGE IN SLEEPING CARS.—Hand baggage in sleeping cars in restricted to what may conveniently be placed in berth or at seat occupied by passengers.

GENERAL OFFICES EXECUTIVE DEPARTMENT 1110 American Bank Building FREIGHT AND PASSENGER TRAFFIC DEPARTMENTS 1101 American Bank Building S. W. Morrison Street, between Broadway and S. W. Sixth Avenue OPERATING DEPARTMENT N. W. Eleventh Avenue and N. W. Hoyt Street PORTLAND, OREGON OFFICERS W. P. KENNEY, Vice-President, St. Paul, Minn. CHARLES DONNELLY, President, St. Paul, Minn. THOMAS BALMER, Assistant to President, Portland, Oregon

Representatives ALBANY, ORE. H. C. REEVES (Phone M. 291), Agent, O. E. Ry. Sta. ASTORIA, ORE. J. C. WRIGHT, General Agent, Telephone 113, S. P. & S. Ry. Station, 20th and Commercial Sts. BEND, ORE. H. M. LABERTEW (Phone 454), Agent, Union Station G. C. PENDERGAST, Trav. Freight and Pass. Agent EUGENE, ORE. S. A. SEXSMITH (Phone 140), Agent, O. E. Ry. Sta. HILLSBORO, ORE. L. SHERMAN (Phone M. 541), Agt., O. E. Ry. Sta. JUNCTION CITY, ORE. L. W. MALLORY (Phone M. 382), Agt., O. E. Ry. Sta. LOS ANGELES, CALIF. Northern Pacific Railway, 506 Central Bldg. Phone Trinity 2322. J. C. SPRACKLIN, General Agent J. E. BEATTY, City Freight & Pass. Agent D. F. WALKER, Traveling Passenger Agent

Great Northern Railway, 605 Central Bldg. Phone Vandike 1201. W. E. McCORMICK, General Agent S. L. WILLIAMS, City Passenger Agent H. D. DAY, Trav. Freight & Pass. Agent PORTLAND, ORE. F. J. McSHATKO, City Passenger & Ticket Agent Consolidated Ticket Office, S. W. Broadway and Morrison St. Telephone BRy. 5631. J. L. MILLER, Ticket Agent, Union Station, Foot of N. W. 6th Avenue, Telephone Broadway 3421. J. C. MOORE, General Agent, Freight Department, Phone Atwater 9111. G. F. EHLEN, Traveling Freight and Passenger Agent, Phone Atwater 9111. C. J. LIVINGSTON, City Pass. Agt, Phone At. 9111. H. SHEEDY, Local Freight Agent, N. W. 11th and Hoyt, Phone Atwater 9111.

REDMOND, ORE. G. W. SEXSMITH (Phone Black 79), Agt, Union Station ST. HELENS, ORE. R. A. OLSON (Phone 58), Agent, S. P. & S. Station SALEM, ORE. J. W. RITCHIE (Phone 4763), O. E. Ry. Freight Depot SAN FRANCISCO, CAL. Great Northern Railway, 679 Market Street, Phone Sutter 6051. A. L. SCOTT, General Agent, Passenger Dept. F. E. HOWELL, Traveling Passenger Agent RAY G. DeGUIRE, City Passenger Agent 757 Monadnock Bldg. Phone Douglas 3892. C. A. GERKEN, General Agent, Freight Dept. Northern Pacific Railway, 657 Market St. (Palace Hotel), Phone Sutter 1078. R. J. TOZER, General Agent H. E. PETERSEN, City Passenger Agent W. T. CONKLYN, Traveling Passenger Agent DANIEL TINNEY, Traveling Freight Agent W. R. GLANVILLE, Traveling Freight Agent ROLAND HAACK, City Ticket Agent

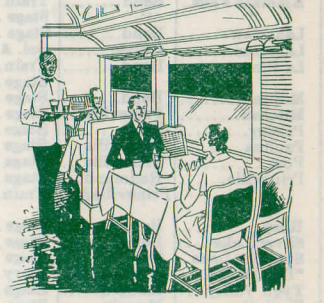
SEASIDE, ORE. C. O. BUTLER (Phone 45) Agent, S. P. & S. Ry. Sta. SPOKANE, WASH. H. W. SHIELDS, General Agent, 925 Old National Bank Building, Phone Main 4238. N. D. KELLER, City Passenger and Ticket Agent, Davenport Hotel, Phone Main 5141. E. F. BAIRD, City Passenger and Ticket Agent, Sprague Ave. and Wall St. Phone Main 5321. H. W. GREEN, Ticket Agent, Gt. Nor. Ry. Station T. A. BRADY, Ticket Agent, Nor. Pac. Ry. Station VANCOUVER, WASH. J. H. CORBETT, Agent (Phone 571), S.P. & S. Ry. Station W. R. EMERSON, (Phone 735), S. P. & S. Ry. Station

PASSENGER STATIONS S. P. & S. Ry., Union Station, Foot of Sixth Avenue Gt. Northern Station, Trains No. 1 and 2. Northern Pacific Station, Trains No. 3 and 4.



THE DAY TRIP Between Portland and Spokane on the Columbia River Express

This train leaves both Portland and Spokane at 8:30 A.M. and arrives both terminals at 6:30 P.M., not only carrying coaches but reserved seat coaches (seat fare 50c) with observation platforms, large windows, comfortable individual chairs, and cafe meal service at economy prices.



The trip is one of the most interesting in the West—Mt. Hood and others of the Cascade Range, alongside view of the great Bonneville dam, two crossings of the Columbia River with a panorama of 220 miles along its north bank, waterfalls and forests, and 40 miles through the Snake River Canyon.

L. C. L.

Mr. Portland Shipper: Just think what it means—Expedition!

Our trucks pick up your L. C. L. freight shipments at your doors—they leave Portland at night and are delivered at consignees' doors in the morning—at Spokane, Salem, Albany, Bend, Redmond and Prineville.

Just call AT. 9111—we do the rest.

SPOKANE, PORTLAND AND SEATTLE RAILWAY LINES